

SL-FA Stratlock™ Female Side Mount

INDUSTRY FIT:



SPECIFICATIONS:

STRATLOCK SL RANGE

The SL-FA provides rapid installation of heavy panels into side-channel aluminium extrusion framework. Designed specifically for contract interior fit out applications, the SL-FA is also suitable for superyacht deckhead panels. Female installs rapidly with a twist-lock function into the side channel, and can be screwed or riveted into its final position. Used with the SL-M18, the new solid internal load chassis creates 4mm supported movement of the panel in any direction at the first engagement before locking into place with a 18kg pull out load. Patent Pending.

Fits into channel dimensions: mouth: 7.5mm - 8.5mm, depth: min 7mm, wall thickness: 0.75mm - 1.2mm. The distance between the panel and substrate when installed is 10.5mm at the first click, and 5mm when pressed into final position. NB: specific channel types will vary throughout regions, please use dimensions to determine suitability.

BENEFITS

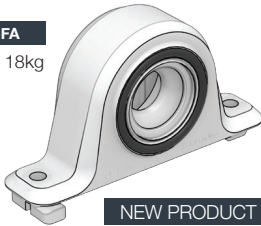
- Strongest available mounting from Fastmount
- T-lock function for rapid installation into channel with screw or pop rivet
- Supported movement of the panel 4mm in any direction before locking into final position.
- No special tools required for installation
- Acoustic isolation between panel and frame
- Designed for aluminium extrusion
- 18kg pull out load with SL-M18
- 5mm standoff between frame and panel
- Adjustability along channel for easy spacing - no drilling required

APPLICATIONS

- Commercial interior fit out
- Architectural and marine applications
- Mounting heavier ceiling and wall panels
- Hotels, hospitals, retail
- Residential fitout
- Superyacht deckhead panels

SL-FA

18kg



NEW PRODUCT

USE WITH:
SL-M18



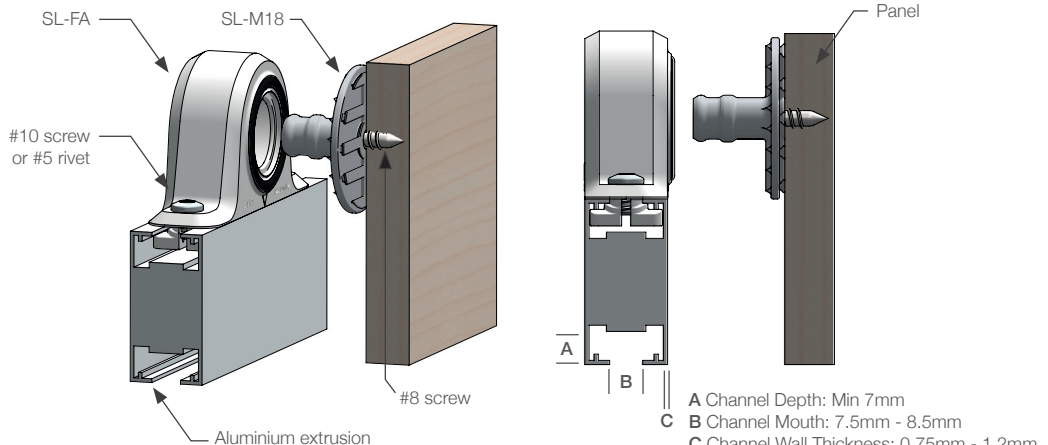
MATERIAL:

White acetyl, rubber o-ring

MORE INFO:

Installation Guide SL-FA
Clip Layout Guide TD-15

INSTALLATION: Partially exploded through section showing typical installation method



The Fastmount® multi-award winning system has revolutionized the mounting of panels. Panels can easily be removed and refitted in any sequence time after time. For further information or technical support contact: info@fastmount.com