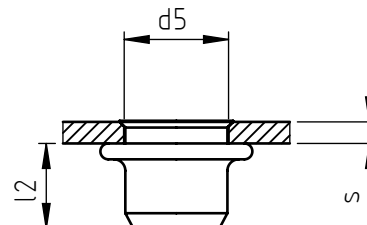
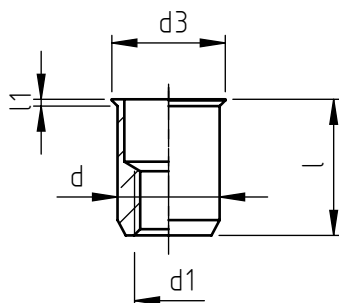


Application: metal and not metal sheets.
Assembly: with special hand or pneumatic tools.



code	steel	steel	stainless steel	s grip	l	d1 6H	d	d3	l1 ~	d5 +0,15 0	l2 *
TFM/C M 5/_	8	8S	X	0,5 ÷ 2,0	9,5	M 5	7	8	0,6	7	5,5
TFM/C M 6/_	8	8S	X	0,5 ÷ 2,5	12,0	M 6	9	10	0,6	9	7,5
TFM/C M 8/_	8	8S	X	0,5 ÷ 2,0	13,0	M 8	11	12	0,6	11	8

Non binding dimensions, expressed in mm.

* Dimension determined from the average of the grip "s" min and max values.

 Standard  On demand  Not manufactured

Material: steel nr.1.0718
steel nr.1.0303
stainless steel nr.1.4305
Finishing: steel: white zinc-plated
stainless steel: natural
Tolerances: according to UNI standards EN 22768-1
Thread: ISO 6 H metric
Example: blind thread nut, low profile head,
round short shank, stainless steel,
grip 2,0 mm, M 6 thread:
TFM/C M 6/X

_____/_____/8
_____/_____/8S
_____/_____/X

