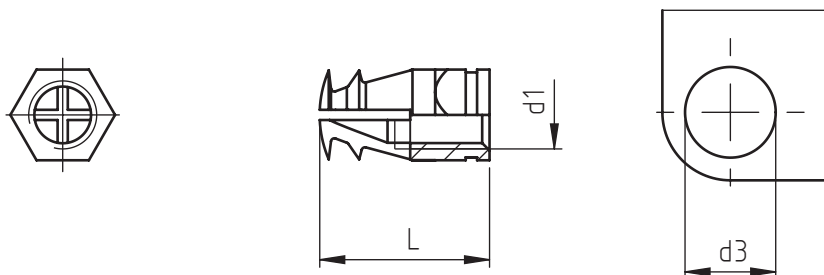


Applications: wood and derivatives.  
Assembly: by pressure through expansion anchorage.



notes	code	metric thread	total length	hole diameter	minimum hole depth	minimum panel thickness
		d1	L	d3		
-	M 04 TE 55	M 4	5,5	5,5	5,5	7
-	M 04 TE 75		7,5		7,5	9
(1)	M 04 TE 100		10		12	15
-	M 05 TE 70	M 5	7	6	7	9
(1)	M 05 TE 110		11		14	16
-	M 06 TE 90	M 6	9	8	9	11
(1)	M 06 TE 120		12		15	17
(1)	M 06 TE 150		15		18	20
-	M 08 TE 130	M 8	13	10	13	15
(2)	M 08 TE 200		20		23	25

- (1) Inserts with one nylon ball available on demand  
(2) available with one nylon ball only

Non binding dimensions, expressed in mm.

For a correct usage of the product it is advisable to carry out some preliminary assembling tests to determine the correct hole diameter.

Standard
  On demand
  Not manufactured

Material: brass  
Finishing: natural  
Tolerances: where not specified, coarse degree of accuracy, according to ISO 2768-m  
Example: expansion threaded brass insert "expand-nut", threaded M5, L = 7 mm:  
M 05 TE 70

