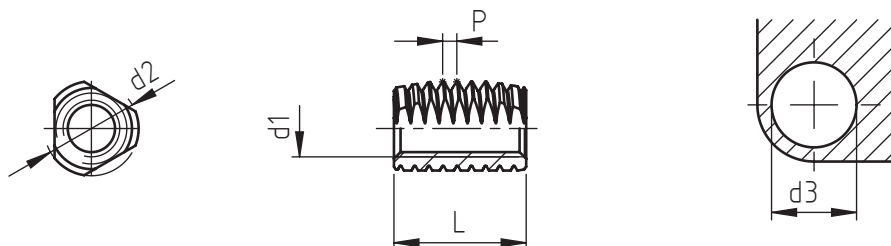


Application: soft thermoplastic materials.  
Assembly: by special equipment.



code	metric thread	special external thread		total length	approx. hole $\phi$	min. hole depth
	d1	d2	P	L	d3	
305 0030.80	M 3	5	0,5	6	4,6 ÷ 4,7	7
305 0040.80	M 4	6,5	0,75	8	6,0 ÷ 6,1	9
305 0050.80	M 5	8	1	10	7,3 ÷ 7,4	11
305 0060.80	M 6	10	1,5	14	9,0 ÷ 9,2	15

Non binding dimensions, expressed in mm.  
Other threads UNC, UNF, WHITWORTH available on demand.

In order to use correctly the products, we suggest to carry out some preliminary assembly tests to determine the right hole.

Standard
  On demand
  Not manufactured

Material: brass  
 Finishing: natural  
 Tolerances: ISO 2768 - m  
 Threading d1: ISO 6 H metric  
 Example: self-tapping Ensats series 305, M5 thread,  
 brass bushing: 305 0050.80

