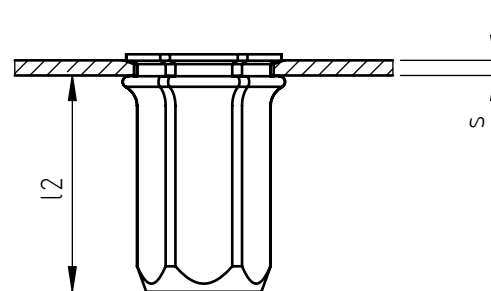
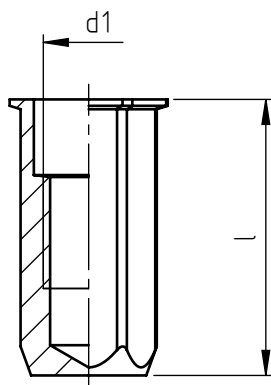
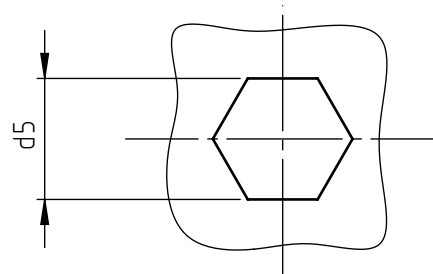
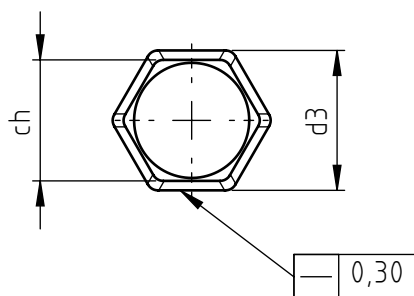


Application: metal and not metal sheets.
Assembly: with special hand or pneumatic tools.



code	s grip	l	d1 6H	ch	d3	l1 ~	d5 +0,15 0	l2 *
E TFM/CH M12/8S	0,5 ÷ 3,5	36,5	M12	16	18,5	1,3	16	28,5
E TFM/LCH M12/8S	3,5 ÷ 6,5	39,5						

Non binding dimensions, expressed in mm.

* Dimension determined from the average of the grip "s" min and max values.



Standard



On demand



Not manufactured

Material: steel nr.1.0303
Finishing: white zinc-plated
Tolerances: according to UNI standards EN 22768-1
Thread: ISO 6 H metric
Example: blind threaded nut, low profile head,
hexagonal close-end shank, steel,
grip 2,0 mm, M 12 thread:
E TFM/CH M12/8S

