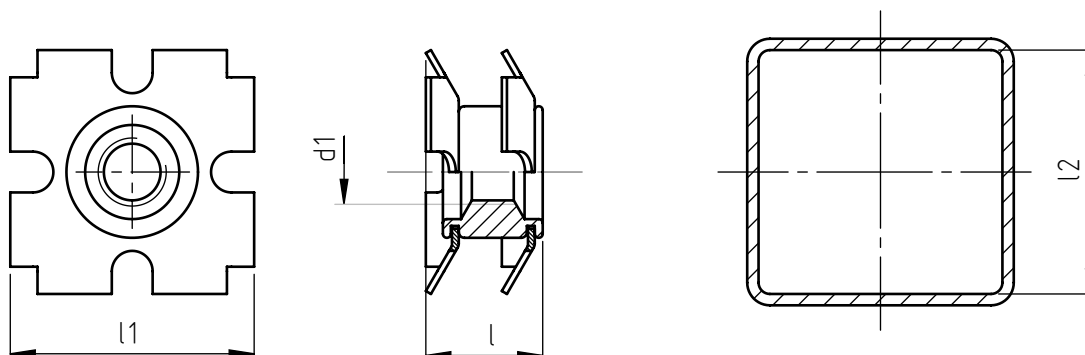


Application: at the end of square metallic and non-metallic tubes.
Assembly: by pressure.



code	d1	l2*	l1	l
ITQ2S/M 6/15,7	M 6	15,7 ÷ 17,1	18,3	11
ITQ2S/M 6/18,9		18,9 ÷ 20,2	21,6	10
ITQ2S/M 6/22,1		22,1 ÷ 23,4	24,3	14,2
ITQ2S/M 6/26,0		26,0 ÷ 28,0	29,2	12
ITQ2S/M 8/15,7	M 8	15,7 ÷ 17,1	18	15
ITQ2S/M 8/18,9		18,9 ÷ 20,2	21,4	14
ITQ2S/M 8/22,1		22,1 ÷ 23,4	24,3	13,8
ITQ2S/M 8/26,0		26,0 ÷ 28,0	29,1	16,2
ITQ2S/M 8/34,8		34,8 ÷ 36,1	37,4	17,3

Non binding dimensions, expressed in mm.

* It is advisable to carry out some preliminary assembling tests in order to determine the best product.

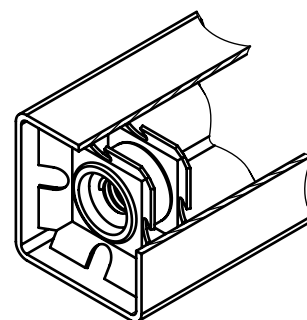
After the insertion of the Crown Nut do avoid heat treatments, galvanization and other heating operations that might compromise the characteristics of the product.

 Standard

 On demand

 Not manufactured

Material: steel
Example: 2 crowns without flange insert for
square tubes, M 6 threaded, tube
internal dimension 20x20 mm:
ITQ2S/M 6/18,9



ITQ2S/M 6/18,9