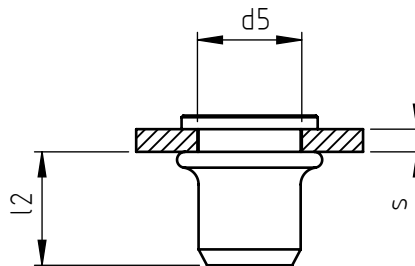
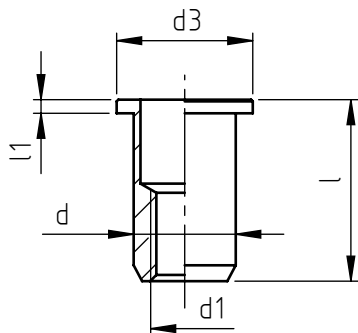


Application: metal and not metal sheets.  
Assembly: with special hand or pneumatic tools.



code	steel	steel	stainless steel	stainless steel	s grip	l	d1 6H	d	d3	l1	d5 +0,15 0	l2 *
9201A/M 3/_	8	--	X	--	0,5 ÷ 2,0	9,5	M 3	5	8	0,8	5	6
9201B/M 3/_	8	--	X	--	2,0 ÷ 3,5	11						
9201A/M 4/_	8	8S	X	XS	0,5 ÷ 2,0	10,5	M 4	6	9	0,8	6	6,5
9201B/M 4/_	8	8S	X	XS	2,0 ÷ 4,0	12,5						
9201A/M 5/_	8	8S	X	XS	0,5 ÷ 2,5	12,5	M 5	7	10	1	7	7
9201B/M 5/_	8	8S	X	XS	2,5 ÷ 4,5	14,5						
9201A/M 6/_	8	8S	X	XS	0,5 ÷ 3,0	16	M 6	9	12	1,2	9	9,5
9201B/M 6/_	8	8S	X	XS	3,0 ÷ 5,5	18,5						
9201A/M 8/_	8	8S	X	XS	0,5 ÷ 3,5	17	M 8	11	14	1,3	11	9,5
9201B/M 8/_	8	8S	X	XS	3,5 ÷ 6,0	19,5						
9201A/M10/_	8	8S	X	XS	0,5 ÷ 3,5	21	M10	13	16	1,5	13	12,5
9201B/M10/_	8	8S	X	XS	3,5 ÷ 6,0	23,5						
9201A/M12/_	8	--	X	--	0,5 ÷ 3,5	25	M12	15	18	2	15	16
9201B/M12/_	8	--	X	--	3,5 ÷ 6,5	28						

Non binding dimensions, expressed in mm.

\* Dimension determined from the average of the grip "s" min and max values.



Standard



On demand



Not manufactured

Ref. UNI 9201 standard

Material: steel nr.1.0718  
steel nr.1.0303  
stainless steel nr.1.4305  
stainless steel nr.1.4567

Finishing: steel: white zinc-plated  
stainless steel: natural

Tolerances: according to UNI standards EN 22768-1

Thread: ISO 6 H metric

Example: blind threaded nut, cylindrical head,  
round shank, stainless steel,  
grip 2,0 mm, M 6 thread:

9201A/M 6/X

\_\_\_\_\_/\_\_\_\_\_/8  
\_\_\_\_\_/\_\_\_\_\_/8S  
\_\_\_\_\_/\_\_\_\_\_/X  
\_\_\_\_\_/\_\_\_\_\_/XS

